



LCD DISPLAY 20X4 BLUE/WHITE



Weight 74 g

DESCRIPTION

LCD display with HD44780 controller enables showing text, symbols, value or anything else that comes from Croduino/Arduino. It is capable of showing 20 symbols in four lines and therefore can be used in many projects that need to send clearly visible and legible output information.

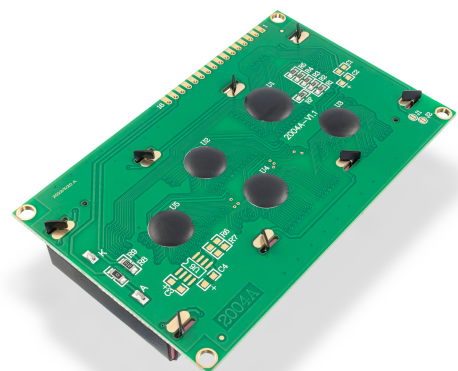
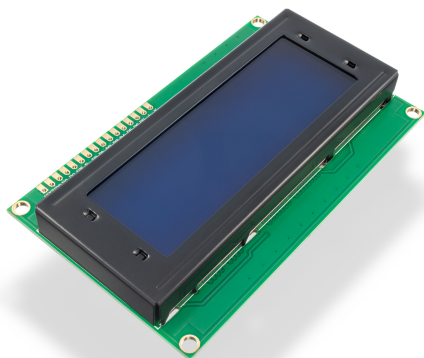
FEATURES

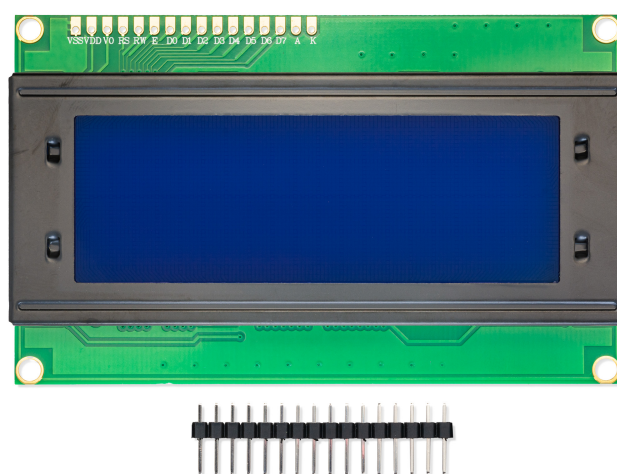
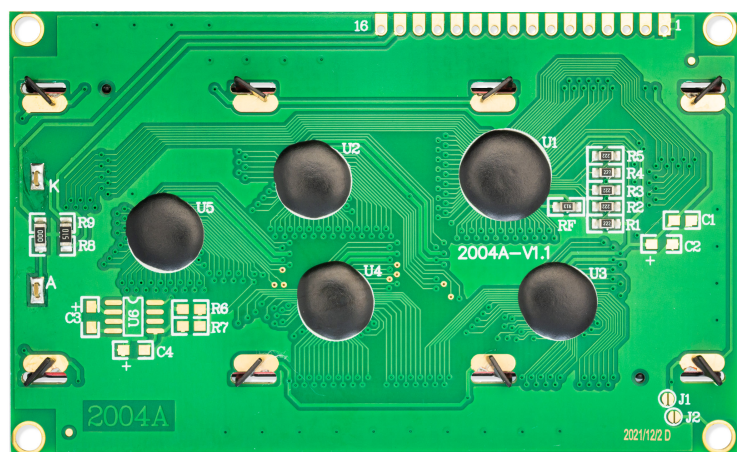
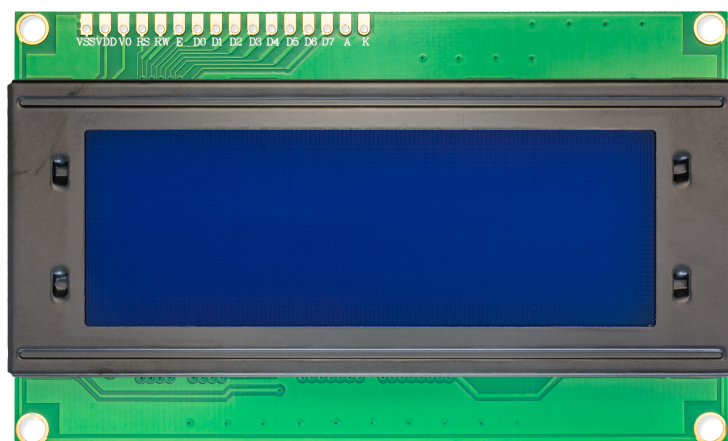
- Color of symbols: White
- Backlight: Blue
- Voltage: 5V
- It comes with a 16-pin flat, non-soldered male header.
- Screen dimensions: 77 x 25.2 mm / 3" x 1"
- Dimensions: 98 x 60 x 12 mm / 3.9" x 2.4" x 0.5"

USEFUL LINKS

- [Datasheet](#)

OTHER IMAGES





Weight

74 g